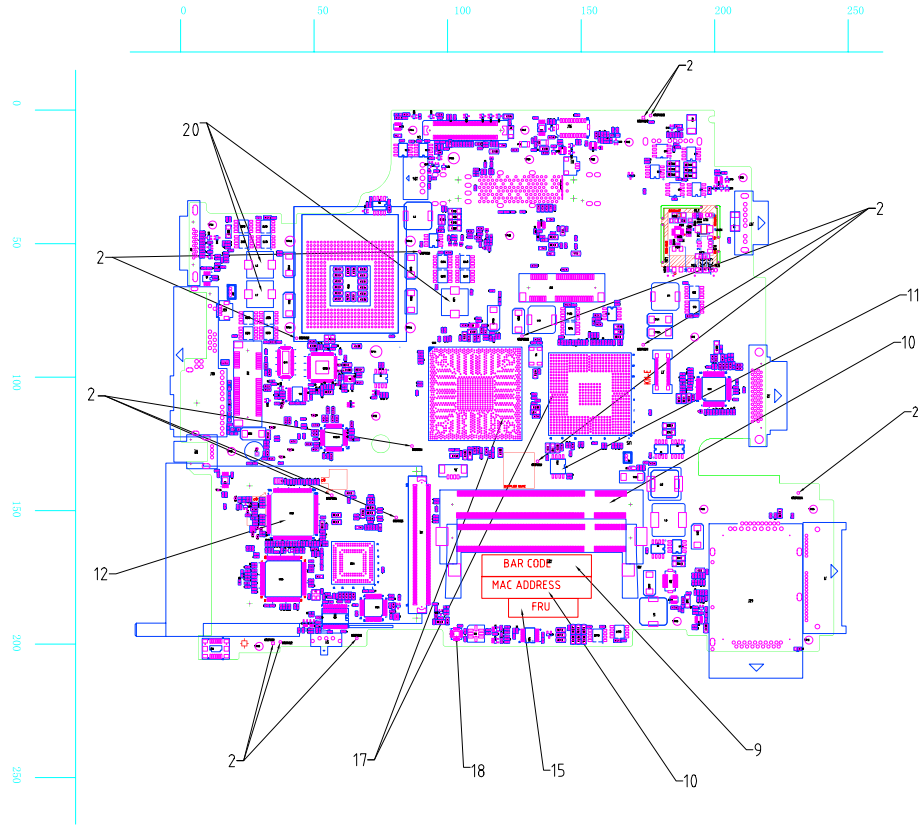


1		2		3		4		5		6		7		8		9		10	
A	REL FOR ASM			QTY	TECHNICAL APPROVAL			SYM	DATE		EC NO.		SYM	DATE		EC NO.		PART NO.	
					ELECTRICAL			REV.	01NOV06		L03187							P/N 42W9260	
					MATERIAL			REV.	13DEC06		L03640								
								REV.	23JAN07		L114.05							DEVELOPMENT NO.	
								REV.	12FEB07		L114.18							Q/M	

SHEET 1 OF 5

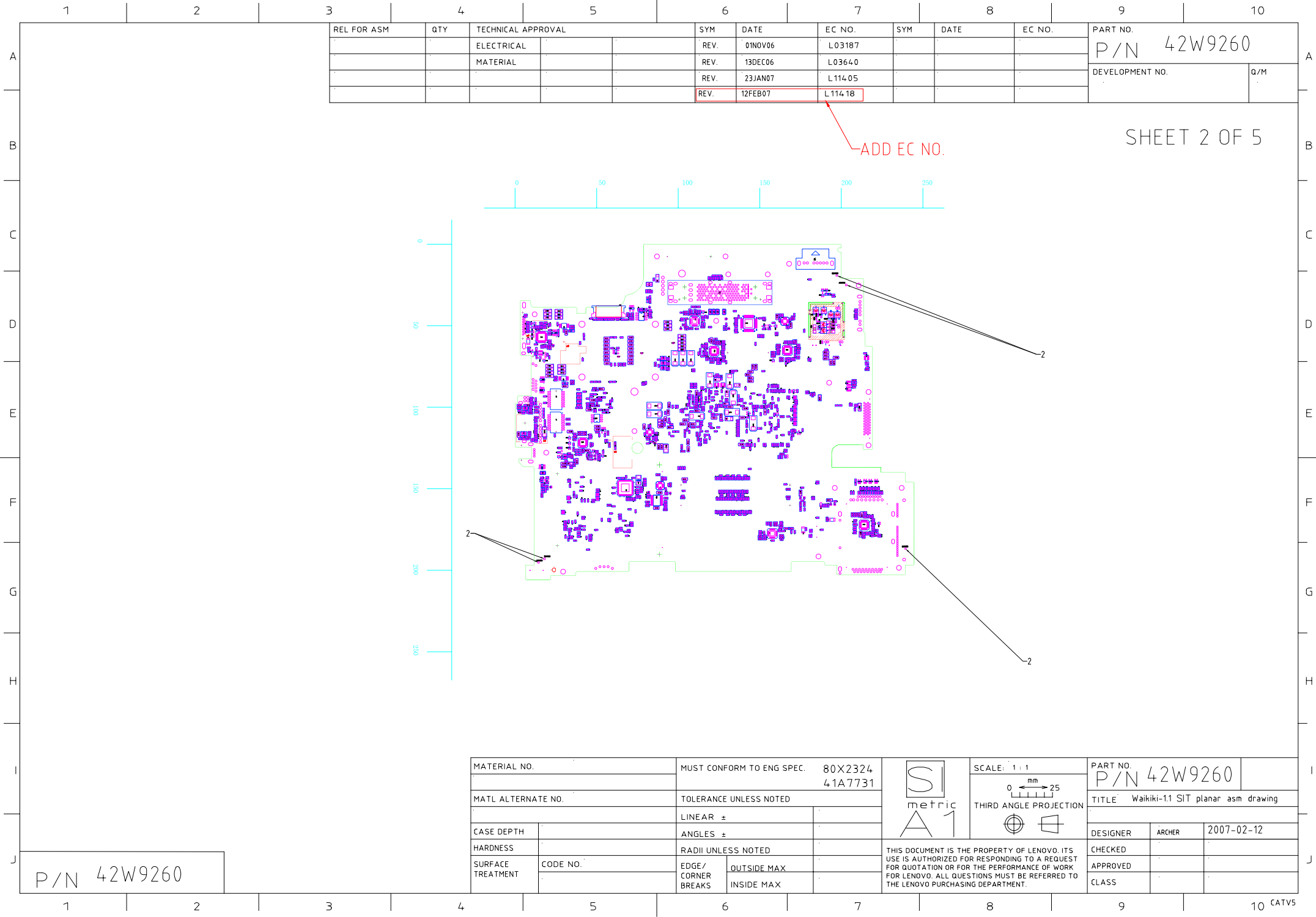
ADD EC NO.







P/N 42W9260

SIT NEW P/N

MATERIAL NO.		MUST CONFORM TO ENG SPEC.		80X2324 41A7731		SCALE: 1 : 1		PART NO.	P/N 42W9260
MATL ALTERNATE NO.		TOLERANCE UNLESS NOTED				 THIRD ANGLE PROJECTION		TITLE Waikiki-1.1 SIT planar asm drawing	
CASE DEPTH		LINEAR	±					DESIGNER	ARCHER
HARDNESS		ANGLES	±					2007-02-12	
SURFACE TREATMENT	CODE NO.	RADI UNLESS NOTED				THIS DOCUMENT IS THE PROPERTY OF LENOVO. ITS USE IS AUTHORIZED FOR RESPONDING TO A REQUEST FOR QUOTATION OR FOR THE PERFORMANCE OF WORK FOR LENOVO. ALL QUESTIONS MUST BE REFERRED TO THE LENOVO PURCHASING DEPARTMENT.		CHECKED	
		EDGE/ CORNER BREAKS	OUTSIDE MAX INSIDE MAX					APPROVED	
								CLASS	



P/N 42W9260

MATERIAL NO.		MUST CONFORM TO ENG SPEC.		80X2324 41A7731	 metric A1	SCALE: 1:1  THIRD ANGLE PROJECTION 		PART NO. P/N 42W9260	
MATL ALTERNATE NO.		TOLERANCE UNLESS NOTED				TITLE Waikiki-1.1 SIT planar asm drawing			
CASE DEPTH		LINEAR ±			 metric A1	DESIGNER		ARCHER	2007-02-12
HARDNESS		ANGLES ±				CHECKED			
SURFACE TREATMENT	CODE NO.	EDGE/ CORNER BREAKS	OUTSIDE MAX			APPROVED			
			INSIDE MAX			CLASS			
					THIS DOCUMENT IS THE PROPERTY OF LENOVO. ITS USE IS AUTHORIZED FOR RESPONDING TO A REQUEST FOR QUOTATION OR FOR THE PERFORMANCE OF WORK FOR LENOVO. ALL QUESTIONS MUST BE REFERRED TO THE LENOVO PURCHASING DEPARTMENT.				

1	2	3	4	5	6	7	8	9	10						
A	REL FOR ASM		QTY	TECHNICAL APPROVAL		SYM	DATE	EC NO.	SYM	DATE	EC NO.	PART NO.	P/N 42W9260	DEVELOPMENT NO.	Q/M
				ELECTRICAL		REV.	01NOV06	L03187							
				MATERIAL		REV.	13DEC06	L03640							
						REV.	23JAN07	L11405							
B						REV.	12FEB07	L11418							
	SHEET 3 OF 5														
	NOTES:														
	1, RAW CARD P/N IS 42W9259														
C	2, ASSEMBLY FIDUCIAL POINT														
	TOP:														
	BOT:														
	(1364. 00, -143. 00) (568. 00, -317. 00)														
D	(1470. 00, -161. 00) (710. 00, -404. 20)														
	(2598. 40, -214. 40) (7763. 00, -7247. 00)														
	(2228. 20, -2325. 60) (7993. 00, -7020. 00)														
	(3179. 00, -1998. 00) (9423. 00, -650. 00)														
E	(3410. 80, -3049. 80)														
	(1711. 00, -4639. 90)														
	(3523. 00, -5918. 00)														
	(5262. 80, -2826. 70)														
F	(5034. 00, -4673. 00)														
	(6821. 00, -4544. 00)														
	(6824. 00, -7893. 00)														
	(6929. 00, -7923. 00)														
G	(9108. 00, -2359. 00)														
	3, UL FLAMMABILITY OF THIS RAW CARD MUST BE UL 94V-0 OR BETTER														
	TEMPERATURE CLASS OF THIS RAW CARD IS 130 DEGREE.														
	4, SCALE IS INDICATED.														
H	5, WARNING:														
	PROPER ESD PROCEDURES AND PROTECTION MUST BE IN PLACE														
	WHEREVER CARDS ARE HANDLED														
	ELECTROSTATIC DISCHARGES MAY DESTROY MODULES.														
I	6, WARNING:														
	THE MANUFACTURING PROCESS OF THIS PRINTED CIRCUIT CARD														
	MAY REQUIRE SPECIAL														
	SAFETY AND/OR HEALTH PRECAUTIONS.														
J	7, CONNECTORS SHOULD BE SOLDERED FLUSH WITHIN 0.3mm MAX ON														
	THE SURFACE OF THE CARD.														
	8, GROUND PADS SHOULD HAVE NO SOLDER.														
	IN CASE OF SOLDER FROM VIAS WITH OPPOSITE SIDE														
K	SOLDERED AND/OR SOLDER ACCIDENTALLY														
	ADHERED. SUCH SOLDER THICKNESS MUST NOT EXCEED 0.05mm.														
	9, APPLY BARCODE LABEL TO THE INDICATED AREA.														
	THE BARCODE HEADER:XXXXX (ASSIGNED BY RALEIGH GCM)														
L	NOTE : IDENTIFICATION OF FRU P/N IS NOT REQUIRED AT THIS PLANAR														
	LEVEL.														
	10, PRINT 3 MAC LABELS BY USING CODE 39 AND APPLY 1 LABEL TO														
	INDICATED AREA.														
M	ALSO ATTACH OTHER 2 LABELS ON J21 WITH ADHESIVE TAPE														
	MAC ADDRESS : XX XX XX XX XX XX (ASSIGNED BY RAREIGH GCM)														
	11, U49 (BLANK FLASH ROM) SHOULD BE PROGRAMMED.(REFER TO EC NOTICE)														
	12, U23 (BLANK HB) SHOULD BE PROGRAMMED (REFER TO EC NOTICE)														
N	13, COUNTRY OF ORIGIN MARKING SHOULD BE APPLIED IN THE BARCODE LABEL														
	OR WITH OTHER WAY.														
	COUNTRY OF ORIGIN : ASSEMBLY MADE IN XXXXX														
	(WHERE XXXXX IS A FULL NAME OF THE ASSEMBLY COUNTRY)														
O	14, PART SELECTION RULE.														
	GENERAL INFORMATION.														
	ON ONE LINE BOM ITEM WITH MULTIPLE USAGE QUANTITY.														
	ECAT SHOULD HAVE SAME SUPPLIER COMPONENTS ON ONE PLANAR.														
P	15, APPLY FRU LABEL TO THE INDICATED AREA. LABEL FORM IS AS FOLLOWS.														
	FRU LABEL CONTENTS.														
	(1) LF CARD ASM														
Q	PLANAR FRU PN: XXXXXXXXiiiiiiiiiii														
	xxx : PLANAR FRU P/N														
	iii : BAR CODE FOR PLANAR FRU P/N														
	xxx : POSSIBLE MFG SITE														
R	NOTE : FRU PN WILL BE DEFINED BY BOX/PE EC.														
	LF FRU LABEL SHOULD HAVE "NOT Pb AND e1 MARK"														
	16, FOLLOW VISUAL INSPECTION CRITERIA FOR MOBILE PLANAR														
	17, APPLY GLUE TO U5 AND U55 BY INSTRUCTION														
S	18, DO NOT APPLY SOLDER PASTE TO THERMAL PAD OF U65 (ADXL322/LIS244AL)														
	19, FOLLOWING PARTS SHOULD BE ASSEMBLED.														
	41W6718 (INSULATION SHEET, DOCKING)														
	42W2416 (INSULATION SHEET, PC CARD SLOT)														
T	41V9064 (INSULATION SHEET, FR TOP)														
	42W2385(INSULATION SHEET, UNDER 4-IN-1)														
	41V9774 (INSULATION SHEET, FRONT LOUVER)														
	42W2759 (INSULATION SHEET BOTTOM CPU)														
U	20, TO APPLY AN ADHESIVE UNDER L2,L7 AND L23 TO PREVENT THE COILS FROM STRAYING.														
V															
W															
X															
Y															
Z															
AA															
AB															
AC															
AD															
AE															
AF															
AG															
AH															
AI															
AJ															
AK															
AL															
AM															
AN															
AO															
AP															
AQ															
AR															
AS															
AT															
AU															
AV															
AW															
AX															
AY															
AZ															
BA															
BB															
BC															
BD															
BE															
BF															
BG															
BH															
BI															
BJ															
BK															
BL															
BM															
BN															
BO															
BP															
BQ															
BR															
BS															
BT															
BU															
BV															
BW															
BX															
BY															
BZ															
CA															
CB															
CC															
CD															
CE															
CF															
CG															
CH															
CI															
CJ															
CK															
CL															
CM															
CN															
CO															
CP															
CQ															
CR															
CS															
CT															
CU															
CV															
CW															
CX															
CY															
CZ															
DA															
DB															
DC															
DD															
DE															
DF															
DG															
DH															
DI															
DJ															
DK															
DL															
DM															
DN															
DO															
DP															
DQ															
DR															
DS															
DT															
DU															
DV															
DW															
DX															
DY															
DZ															
EA															
EB															
EC															
ED															
EE															
EF															
EG															
EH															
EI															
EJ															
EK															
EL															
EM															
EN															
EO															
EP															
EQ															
ER															
ES															
ET															
EU															
EV															
EW															
EX															
EY															
EZ															
FA															
FB															
FC															
FD															
FE															
FF															
FG															
FH															
FI															
FJ															
FK															
FL															
FM															
FN															
FO															
FP															
FQ															
FR															
FS															
FT															
FU															
FV															
FW															
FX															
FY															
FZ															
GA															
GB															
GC															
GD															
GE															
GF															
GG															
GH															

1

2

3

4

5

6

7

8

9

10

A

B

C

D

E

F

G

H

I

J

REL FOR ASM	QTY	TECHNICAL APPROVAL			SYM	DATE	EC NO.	SYM	DATE	EC NO.	PART NO.	
		ELECTRICAL			REV	01NOV06	L03187				42W9260	
		MATERIAL			REV	13DEC06	L03640				DEVELOPMENT NO.	
					REV	23JAN07	L11405				Q/M	
					REV	12FEB07	L11418					

42W2416(INSULATION SHEET, PC CARD SLOT)

41W6718(INSULATION SHEET, DOCKING)

42W2833 (INSULATION SHEET, NB)

41V9064(INSULATION SHEET, FR TOP)

42W2792(SHIELD SHEET FOR DC DC)

41V9774(INSULATION SHEET, FRONT LOUVER)

42W2759(INSULATION SHEET, CPU BOTTOM)

42W2385(INSULATION SHEET, UNDER 4-IN-1)

NOTES:

1

41V9064 SHOULD BE ATTACHED AFTER ATTACHING 41V9774.

2INSULATION SHEET SHOULD BE ATTACHED ENOUGH ON CARD AND ITS COMPONENT.

3

WHEN ATTACHING 41W6718, BE CAREFUL TO KEEP FLAT SURFACE AT THIS AREA. WRINKLE NOT PERMISSIBLE.

42W9260

MATERIAL NO.

MATL ALTERNATE NO.

CASE DEPTH

HARDNESS

SURFACE TREATMENT

CODE NO.

MUST CONFORM TO ENG SPEC.

TOLERANCE UNLESS NOTED

LINEAR Å

ANGLES Å

RADII UNLESS NOTED

EDGE / CORNER BREAKS

OUTSIDE MAX

INSIDE MAX

80X2324

41A7731

SI

metri

A1

SCALE: NONE

0 < mm > 25

THIRD ANGLE PROJECTION

PART NO.

42W9260

TITLE

Waikiki-1.1 SIT planar

asm drawing

DESIGNER

ARCHER

2007-02-12

CHECKED

APPROVED

CLASS

THIS DOCUMENT IS THE PROPERTY OF LENOVO. ITS USE IS AUTHORIZED FOR RESPONDING TO A REQUEST FOR QUOTATION OR FOR THE PERFORMANCE OF WORK FOR LENOVO. ALL QUESTIONS MUST BE REFERRED TO THE LENOVO PURCHASING DEPARTMENT.

1

2

3

4

5

6

7

8

9

10

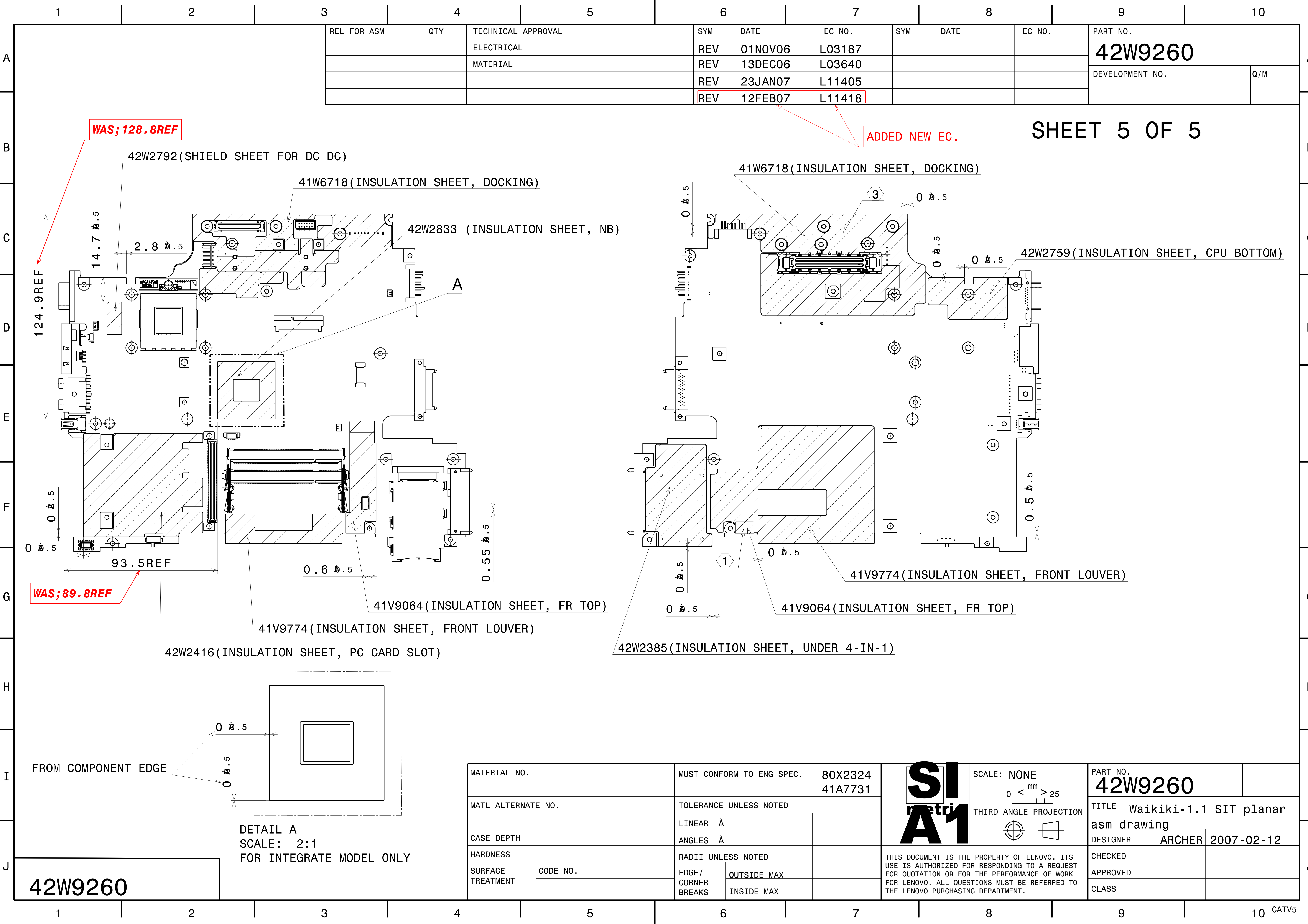
CATV5

FORMAT CREATED 200051103 ON V5R15 SP4

REF: IBMISO\_Large\_mm.xml DATED 20050829

UPGRADED ON:





REL FOR ASM		QTY	TECHNICAL APPROVAL			SYM	DATE	EC NO.	SYM	DATE	EC NO.	PART NO.	
			ELECTRICAL			REV	01NOV06	L03187				42W9260	
			MATERIAL			REV	13DEC06	L03640				DEVELOPMENT NO.	
						REV	23JAN07	L11405				Q/M	
						REV	12FEB07	L11418					

SHEET 5 OF 5

WAS; 128.8REF

ADDED NEW EC.

124.9REF

0.5

WAS; 89.8REF

93.5REF

0.6

0.55

41V9774(INSULATION SHEET, FRONT LOUVER)

42W2416(INSULATION SHEET, PC CARD SLOT)

41V9064(INSULATION SHEET, FR TOP)

41W6718(INSULATION SHEET, DOCKING)

42W2759(INSULATION SHEET, CPU BOTTOM)

41V9774(INSULATION SHEET, FRONT LOUVER)

41V9064(INSULATION SHEET, FR TOP)

42W2385(INSULATION SHEET, UNDER 4-IN-1)

FROM COMPONENT EDGE

DETAIL A  
SCALE: 2:1  
FOR INTEGRATE MODEL ONLY

42W9260

MATERIAL NO.		MUST CONFORM TO ENG SPEC.		80X2324
MATL ALTERNATE NO.		TOLERANCE UNLESS NOTED		41A7731
CASE DEPTH		LINEAR	Å	
HARDNESS		ANGLES	Å	
SURFACE TREATMENT	CODE NO.	RADII UNLESS NOTED		
		EDGE / CORNER BREAKS	OUTSIDE MAX	
			INSIDE MAX	

SI

metri

A1

SCALE: NONE  
0 < mm > 25  
THIRD ANGLE PROJECTION

THIS DOCUMENT IS THE PROPERTY OF LENOVO. ITS USE IS AUTHORIZED FOR RESPONDING TO A REQUEST FOR QUOTATION OR FOR THE PERFORMANCE OF WORK FOR LENOVO. ALL QUESTIONS MUST BE REFERRED TO THE LENOVO PURCHASING DEPARTMENT.

PART NO.		42W9260
TITLE		Waikiki-1.1 SIT planar asm drawing
DESIGNER	ARCHER	2007-02-12
CHECKED		
APPROVED		
CLASS		